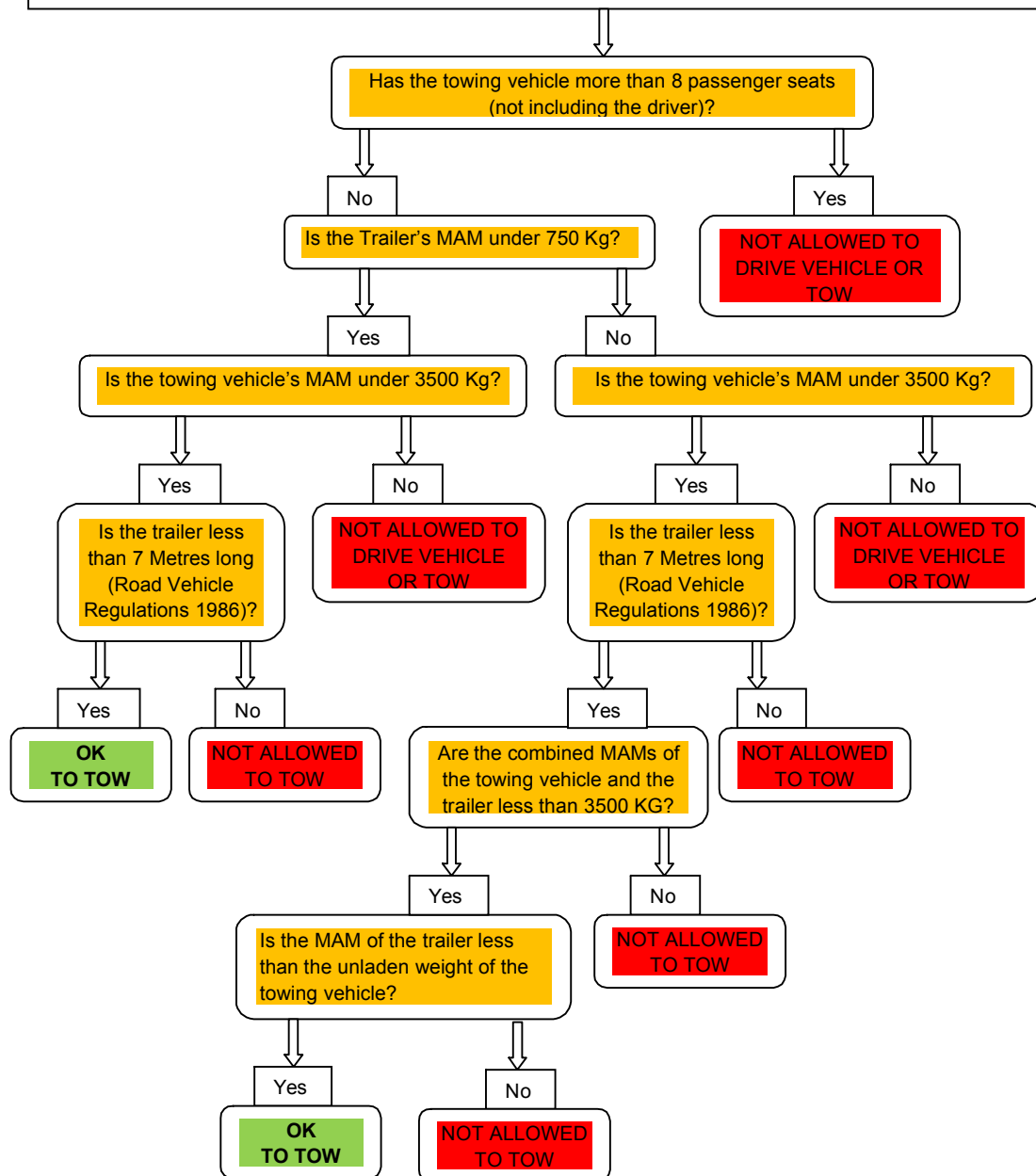




BRITISHROWING

Driving and towing limitations for drivers who first obtained their driving licence on or after 1st January 1997 - Category B



MAM – Maximum Authorised Mass (Maximum Gross Weight)

This is the total weight allowed for the trailer or tow vehicle plus its load. All trailers must be plated to state their MAM (1982 Regulations). Details of the towing vehicle's MAM can be obtained from the vehicle handbook.

UNLADEN WEIGHT

This is the weight of the towing vehicle (or trailer) less removable optional equipment and load. Details can be obtained from the vehicles handbook along with its towing capacity and tow hitch loading.

TRAILER LENGTH

This is a grey area but a common sense approach would be to measure from the load bearing point on the 'A' frame (including attached boxes etc) to the rear lighting unit on the extended draw bar.